

State of Rhode Island and Providence Plantations

# Budget



## Fiscal Year 2015

Volume II – Health and Human Services

Lincoln D. Chafee, Governor

**Dedication**

*This year's budget documents are dedicated to the  
Memory of William V. Golas, Jr.  
Sr. Budget Analyst 1987 - 2013*

*The image on the cover of this year's budget document is a Winter Scene of the State House from Artist John Pitocco of Providence and is reproduced by permission of the artist in collaboration with the Rhode Island State Council on the Arts.*

# Agency

---

## Office Of The Mental Health Advocate

---

### Agency Mission

To ensure the legal, civil, and special rights of people with mental illness in Rhode Island.

To protect the liberty interests and treatment rights of individuals subjected to involuntary commitment and to the involuntary administration of medication in psychiatric facilities, including penal inmates.

To protect the legal rights of clients of the mental health system by means of direct legal representation and/or referral to appropriate resources.

To monitor and evaluate the quality of services available to clients of the mental health system, and to investigate incidents. To address shortcomings and gaps in the services and programs administered by the mental health providers.

To address stigmatizing legal inequities and social barriers that impact upon the lives of individuals with mental illness by means of legislative advocacy, litigation, education, support for the mental health consumer movement, and by outreach to the public at large.

### Agency Description

The Office of the Mental Health Advocate accomplishes its mission by providing legal representation at involuntary commitment proceedings, monitoring procedures and policies at in-patient treatment facilities and community-based mental health programs, proposing and evaluating legislation, and litigating civil rights and treatment rights disputes. The Office also provides counsel to clients of the mental health system who bring complaints involving mental health issues and other issues vital to maintaining quality of life, such as housing and protection from creditors. The Office is also charged to protect the treatment rights of criminally insane persons and prison inmates in the forensic hospital (patients who are under criminal process) and to provide legal representation for indigent persons receiving in-patient substance abuse treatment.

### Statutory History

The Office of the Mental Health Advocate was created in 1975 when the legislature re-wrote and reformed the Mental Health Law of Rhode Island. This reform was part of a national movement toward deinstitutionalization of mentally ill individuals, a movement which began in the 1950's and became a centerpiece of public policy in the 1970's after the United States Supreme Court declared that all states must provide Constitutional Due Process and legal counsel to individuals subjected to involuntary hospitalization. The original statute authorizing the Mental Health Advocate is codified at RI General Laws, Sections 40.1-5-13, 40.1-5-22 and 24 (Public Laws 1974, Ch. 119).

# The Budget

---

## Office Of The Mental Health Advocate Central Management

---

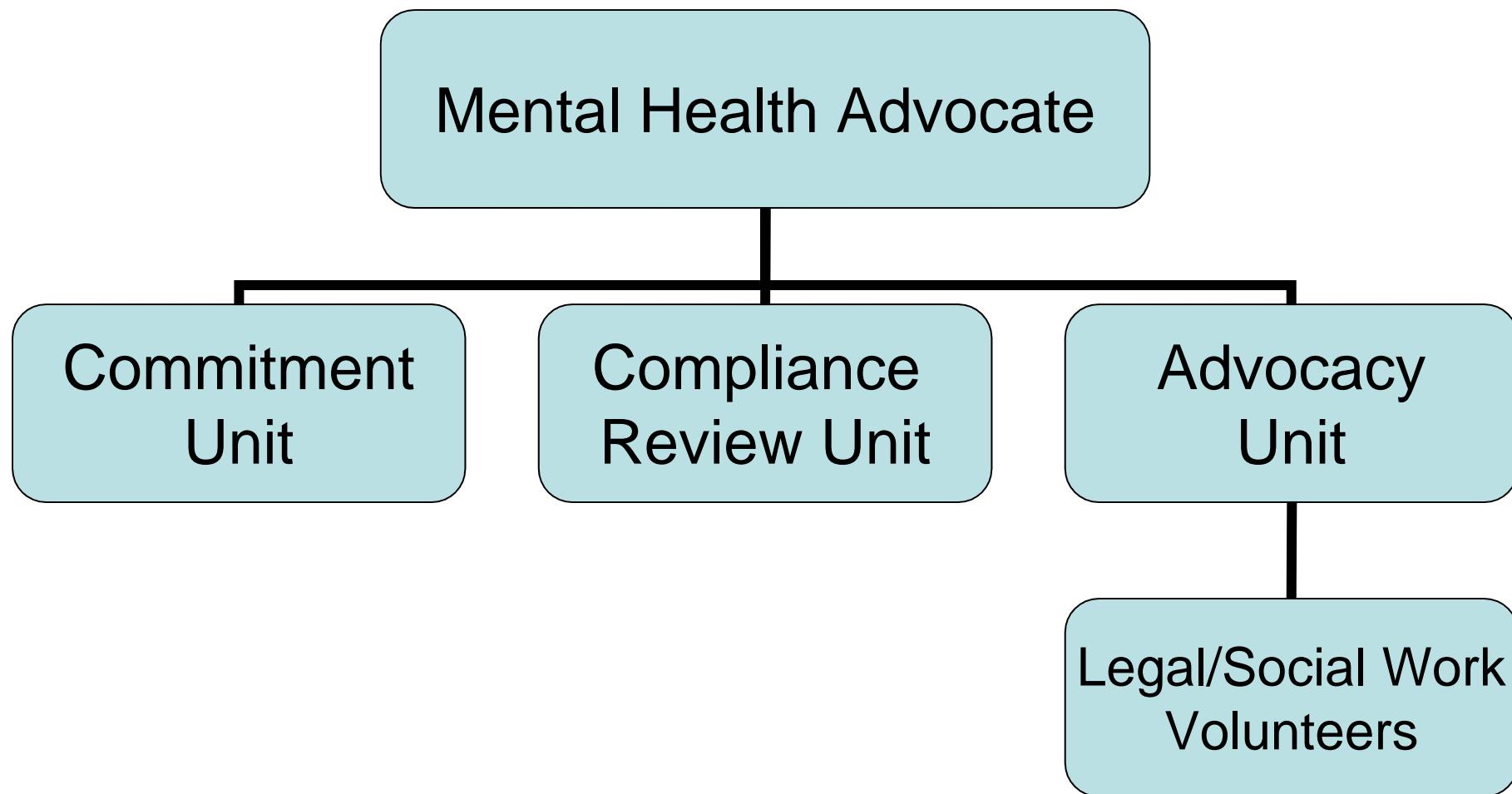
	2012 Audited	2013 Audited	2014 Enacted	2014 Revised	2015 Recommend
<b>Expenditures By Subprogram</b>					
Operations	387,894	340,722	486,144	483,716	495,010
<b>Total Expenditures</b>	<b>\$387,894</b>	<b>\$340,722</b>	<b>\$486,144</b>	<b>\$483,716</b>	<b>\$495,010</b>
<b>Expenditures By Object</b>					
Personnel	369,047	329,416	475,648	473,681	482,314
Operating Supplies and Expenses	13,562	10,472	10,496	10,035	12,696
<b>Subtotal: Operating Expenditures</b>	<b>382,609</b>	<b>339,888</b>	<b>486,144</b>	<b>483,716</b>	<b>495,010</b>
Capital Purchases and Equipment	5,285	834	-	-	-
<b>Total Expenditures</b>	<b>\$387,894</b>	<b>\$340,722</b>	<b>\$486,144</b>	<b>\$483,716</b>	<b>\$495,010</b>
<b>Expenditures By Funds</b>					
General Revenue	387,894	340,722	486,144	483,716	495,010
<b>Total Expenditures</b>	<b>\$387,894</b>	<b>\$340,722</b>	<b>\$486,144</b>	<b>\$483,716</b>	<b>\$495,010</b>

# The Agency

---

Office of the Mental Health Advocate

---



# Personnel

## Office Of The Mental Health Advocate Central Management

	Grade	FY 2014		FY 2015	
		FTE	Cost	FTE	Cost
<b>Unclassified</b>					
MENTAL HEALTH ADVOCATE	00862F	1.0	100,641	1.0	100,641
STAFF ATTORNEY III	00832A	1.7	126,277	1.7	128,714
ADMINISTRATIVE ASSISTANT	00323A	1.0	56,749	1.0	56,749
<b>Subtotal</b>		<b>3.7</b>	<b>\$283,667</b>	<b>3.7</b>	<b>\$286,104</b>
<b>Total Salaries</b>		<b>3.7</b>	<b>\$283,667</b>	<b>3.7</b>	<b>\$286,104</b>
<b>Benefits</b>					
Payroll Accrual			1,623		1,637
FICA			21,700		21,886
Retiree Health			20,055		19,312
Health Benefits			64,558		69,805
Retirement			68,222		69,610
<b>Subtotal</b>			<b>\$176,158</b>		<b>\$182,250</b>
<b>Total Salaries and Benefits</b>		<b>3.7</b>	<b>\$459,825</b>	<b>3.7</b>	<b>\$468,354</b>
<b>Cost Per FTE Position (Excluding Temporary and Seasonal)</b>			<b>\$124,277</b>		<b>\$126,582</b>
<b>Statewide Benefit Assessment</b>			<b>\$12,056</b>		<b>\$12,160</b>
<b>Payroll Costs</b>		<b>3.7</b>	<b>\$471,881</b>	<b>3.7</b>	<b>\$480,514</b>
<b>Purchased Services</b>					
Clerical and Temporary Services			200		200
Other Contracts			100		100
Medical Services			1,500		1,500
<b>Subtotal</b>			<b>\$1,800</b>		<b>\$1,800</b>
<b>Total Personnel</b>		<b>3.7</b>	<b>\$473,681</b>	<b>3.7</b>	<b>\$482,314</b>
<b>Distribution By Source Of Funds</b>					
General Revenue		3.7	\$473,681	3.7	\$482,314
<b>Total All Funds</b>		<b>3.7</b>	<b>\$473,681</b>	<b>3.7</b>	<b>\$482,314</b>